

Postgrad Prospectus



LINCOLN
UNIVERSITY

TE WHARE WĀNAKA O AORAKI



Things grow when the conditions are right.

It's true for industry, agriculture and it's most certainly true for people. At Lincoln University, helping you grow is what we are all about.

And we encourage you to do it your way, with diverse learning that fits your ambitions in an environment that allows you to flourish.

We partner you with industry to prepare you for the real world and to plant the seeds of a rewarding future.

So when the time comes, you're ready to go out there and grow the future for yourself and others.

Welcome to Lincoln University.
A place to grow.



LINCOLN
UNIVERSITY
TE WHARE WĀNAKA O AORAKI

**Ka tipu, ka rea, ka whanake
ake te rākau mātauraka**

**Ko tōna pakiaka,
he waewae haere**

**Ko tōna kaupapa,
he takata ora**

**Nau mai, ki Te Whare
Wānaka o Aoraki**

*Plant, nurture and grow the tree of knowledge
Whose roots allow it to move freely
Whose purpose is to support healthy people*

Why Lincoln?	01	Financing Your Study	39
Canterbury	02	Financing your study	40
Ōtautahi Christchurch	04	Scholarships and funding	41
Lincoln campus	06	Fees	42
Life's good at Lincoln	08	Student Support	43
Great futures grow at Lincoln	10	LUSA	44
Global reach & relevance	12	Māori and Pasifika support	45
Postgraduate Study	14	International student support	46
Why postgraduate study?	15	Additional support services	50
Areas of specialisation	16	Additional information	51
Our Faculties	18	Accommodation	52
Faculty of Agribusiness & Commerce	20	Apply and enrol	53
Faculty of Agriculture & Life Sciences	21	Key Dates	54
Faculty of Environment & Design	22	Terminology	56
University Studies and English Language	23	Contacts	57
Research	24		
Research at Lincoln	25		
Centres of Excellence	26		
Research centres	27		
Research partners	29		
National research partners	30		
Joint Postgraduate School	31		
Postgraduate at Lincoln	32		
Postgraduate pathways	33		
English Language courses	34		
Postgraduate programmes	35		
Postgraduate entry requirements	38		

Contents



Welcome



Kia ora koutou

Congratulations on all that you have achieved so far and welcome to the next phase of your tertiary journey at Aotearoa New Zealand's specialist land-based university.

As the modern world grows ever more diverse, a postgraduate education is one of the best ways to take your career prospects and expertise to the highest level.

Whatever your chosen discipline, you will benefit hugely from the academic rigour and practical experience offered at Lincoln as we support you to work towards your goals.

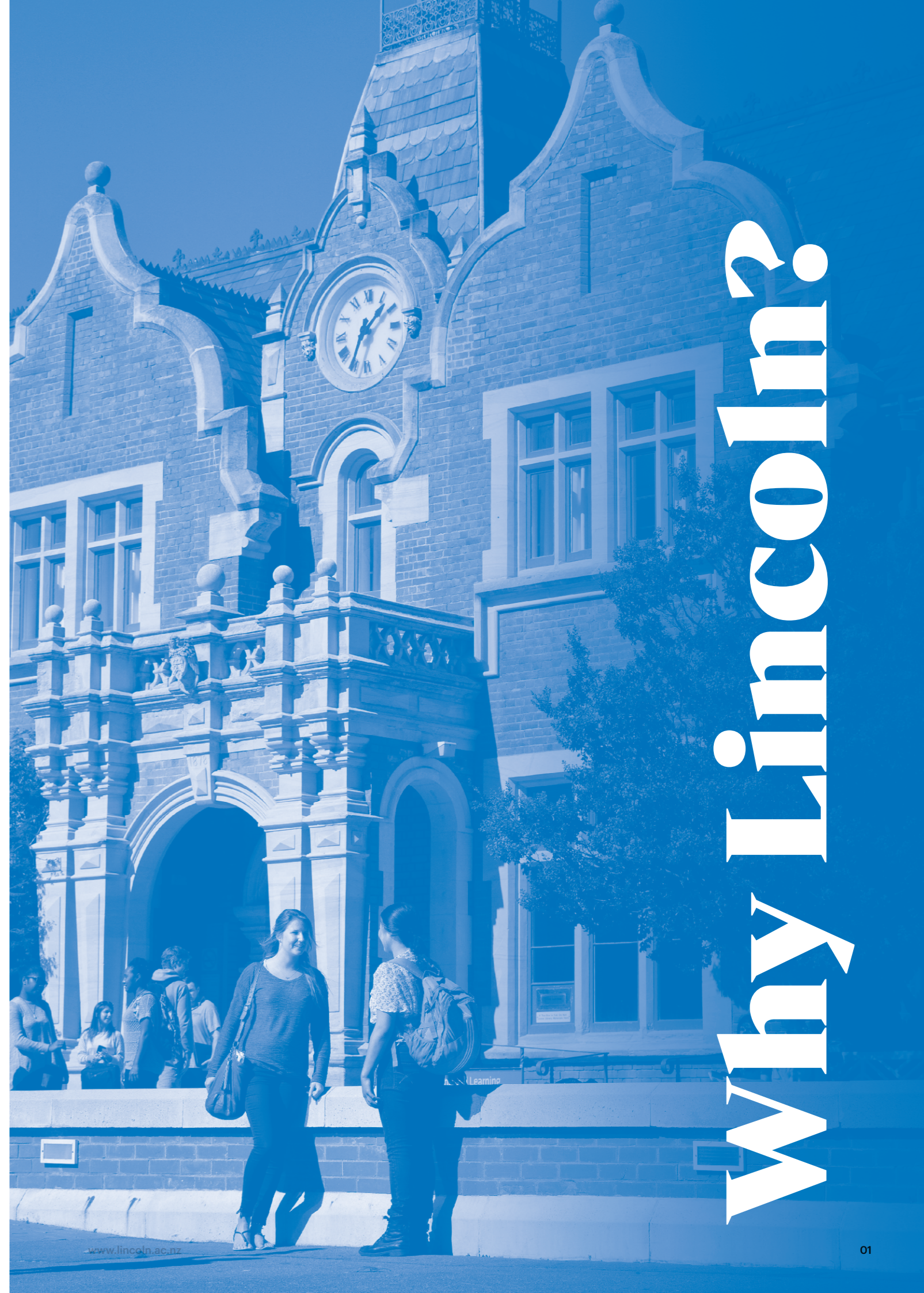
Our leading-edge land-based research activities, meaningful industry collaborations, global connections, modern learning environments and internationally recognised academics are invaluable, especially at postgraduate level.

As well as enjoying a wealth of opportunities for advanced learning, you will be part of a thriving and inclusive postgraduate community, securing industry contacts and forming lifelong friendships.

We truly look forward to helping you grow.

A handwritten signature in black ink, appearing to read 'G Edwards'.

Professor Grant Edwards
Vice-Chancellor, Lincoln University



A place like no other

Welcome to Canterbury.

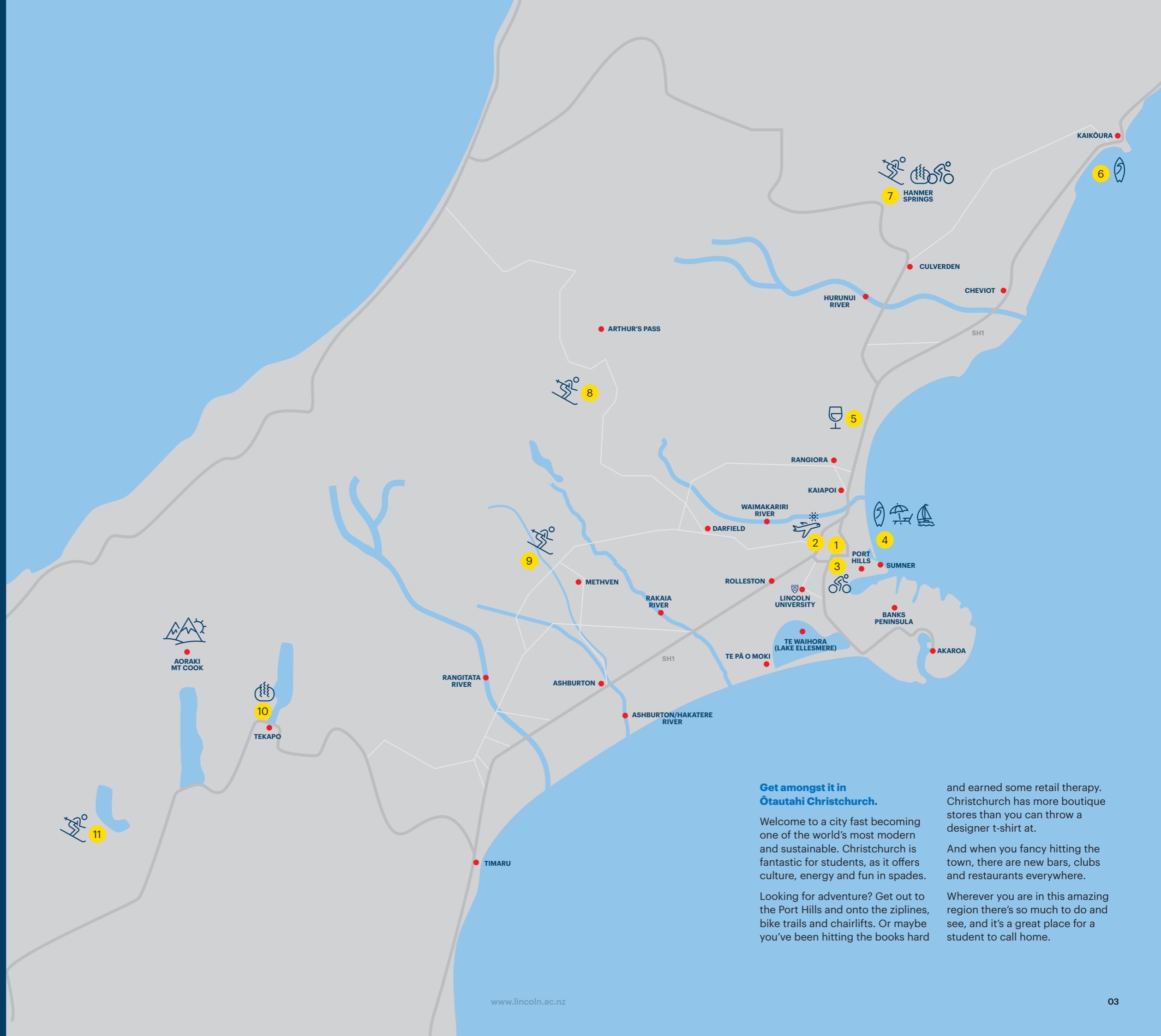
Our campus is located in Lincoln township, a thriving town on the Canterbury Plains.

Lincoln is small and friendly, boasting local pubs, great cafés and eateries, shops and even its own farmers and craft market.

The Canterbury region offers a plethora of attractions, activities and natural wonders, from snowy mountains and wide-open plains to the stunning coastline.

And when you feel like a weekend on the slopes, it's less than two hours' drive to the nearest ski area.

- 1 Ōtautahi Christchurch CBD – Hagley Park, Botanical Gardens
- 2 Christchurch International Airport
- 3 Christchurch Adventure Park
- 4 Beaches – New Brighton, Sumner, Taylors Mistake
- 5 Wineries
- 6 Surfing Kaikōura area
- 7 Hanmer Springs Thermal Pools and Spa, Hanmer Springs Ski Area
- 8 Ski areas – Porters, Cheeseman, Broken River, Craigieburn, Temple Basin, Mt Olympus
- 9 Mt Hutt Ski Area
- 10 Tekapo Springs (hot pools)
- 11 Ōhau Snow Fields



Get amongst it in Ōtautahi Christchurch.

Welcome to a city fast becoming one of the world's most modern and sustainable. Christchurch is fantastic for students, as it offers culture, energy and fun in spades.

Looking for adventure? Get out to the Port Hills and onto the ziplines, bike trails and chairlifts. Or maybe you've been hitting the books hard

and earned some retail therapy. Christchurch has more boutique stores than you can throw a designer t-shirt at.

And when you fancy hitting the town, there are new bars, clubs and restaurants everywhere.

Wherever you are in this amazing region there's so much to do and see, and it's a great place for a student to call home.

It all happens in Ōtautahi Christchurch

Get the best of both worlds in Ōtautahi Christchurch.

Ōtautahi Christchurch is the largest and most vibrant city in Te Waka o Aoraki (the South Island), where opportunity and lifestyle collide.

Modern and sustainable, it has transformed into a hotspot of innovative thinking and development across many diverse areas.

And then there's the lifestyle. For fun and adventure, get onto the ziplines, chairlifts and bike trails of the Port Hills. Or if you've earned a spot of retail therapy, there are boutique stores all over town with new restaurants and bars to keep you fed and refreshed.

Amazing things are happening in Ōtautahi Christchurch. Come and be part of it today.

- 1 Kaikōura (2hrs north of Ōtautahi Christchurch) has some of the most incredible whale watching tours in New Zealand.
- 2 Hit the slopes at a number of incredible ski fields close to Lincoln.
- 3 The Terrace along the Ōtākaro Avon river front in the centre of Christchurch is a great place to grab a drink or a bite to eat.
- 4 The Gondola up the Port Hills has amazing views over the city and is an exciting place to go for lunch.
- 5 There's a wide range of mountain biking and walking tracks all over Te Pātaka o Rākaihautū (Banks Peninsula).



A place to grow since 1878

In the heart of New Zealand's South Island is Lincoln University's Te Waihora campus.

58 hectares of green and pleasant fields surround this historic yet modern campus. We pride ourselves on providing a safe, all-inclusive environment for a close-knit group of around 3,000 students, who come from more than 65 countries.

Great facilities are plentiful with advanced teaching spaces, a comprehensive library, leading-edge information technology laboratories with 24-hour access, eateries, a printery, world-class sporting facilities, and a fully equipped fitness centre.

The Lincoln campus is always changing, with a major redevelopment plan aimed at growing even stronger connections between students, staff and visitors.

The plan builds on an environment that nurtures growth in all areas of development, including physical, emotional, intellectual, financial and societal.

As well as making sure that our physical surroundings are in the best possible shape, we're also constantly updating our online learning options, which help to enhance your understanding of course content.

This is the beating heart of one of the world's highest ranked small universities and New Zealand's best at harnessing the values of the land. And just like our students, Lincoln is changing and growing all the time.



Book a personalised, one-on-one campus tour with a Student Liaison Officer. See page 57 for more information.



Creating an environmentally sustainable future

In the **Top 400** for Environmental Sciences*



*2022 QS World University rankings

At Lincoln University, we're deeply committed to helping shape a more sustainable future for our communities and the generations to come.

Protecting the environment, conserving resources and sustaining ecosystems are central tenets in our teaching, with our research striving to understand and enhance the relationships between our land, food and ecosystems.

Our postgraduate students have a major role to play in the push towards greater sustainability, as regardless of their subject area, they are at the forefront of innovation in this space.

As part of our mission to tread lightly on the earth, we have set ambitious sustainability targets for our campus – in energy conservation, greenhouse gas emission reduction, protection of native biodiversity, water management and resource recovery.

The NZ Government has endorsed our goal to be carbon neutral by 2030, with a \$4.5 million funding boost to convert our heating network to 100% electricity.

Our vision is to make Lincoln University an exemplar of sustainable practices, and our extensive community of current and former students is actively engaged in developing solutions for the grand challenges facing the land-based sectors.

Everyone in the Lincoln whānau plays their part in the university's environmental sustainability credentials – guided, encouraged and monitored by our Sustainability Action Group for the Environment (SAGE) in partnership with the Lincoln University Students' Association (LUSA) and student club Lincoln Environmental Sustainability Society (LESS).

Lincoln University is the only New Zealand university to achieve a ranking on the UI Green Metric World University Rankings and to have commercial-scale solar power generating capabilities. Two

major roof-mounted solar installations are in commission and further arrays, including a ground-mounted solar farm, are in the works.

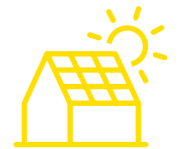
Throughout the next decade, Lincoln University's planned development programme will put environmental sustainability at the very heart of our campus, with the construction of a network of fit-for-future carbon-neutral teaching, research and recreation spaces, supported by 100% renewable infrastructure and wrapped within a vibrant and biodiverse ecosystem.

We see sustainability as non-negotiable. To us, business as usual is no longer an option. Instead, we see restoration of our land and environment as the imperative for our future, and we're proud to be equipping new generations of leaders with the knowledge and inspiration needed to build that better future.

www.lincoln.ac.nz/sustainability



Solar array on the Agricultural Sciences Building contributing to our renewable energy generation.



Lincoln University's Solar energy generating capacity is enough to power

72.5

average-sized houses for a year

Life's good at Lincoln

When you're doing it right, there's much more to university than just research and study. Especially if you're doing it at Lincoln. It's a green and vibrant village full of like-minded people. There's always something to get involved in and the vibe is always friendly.

Join the club.

Looking for great ways to meet new people, broaden your horizons and have some fun? Join a club. The Lincoln University Students' Association (LUSA) and Whare Hākinakina LU Gym oversee all of the university's clubs, organisations and sports teams. We can fill you in on what's out there or even help you set up your own club.

Te Awhioraki

Te Awhioraki is an association which represents all Māori students on campus and is managed and run by Māori students themselves. For more information see page 45.

Help is here.

Every student needs a little help now and then. That's why we have support services for every area of student life. And they're there for you whenever you need them. Whether it's budgeting advice, help with a physical or mental health problem or you just want someone friendly to talk to, we're on your side.

Whare Hākinakina LU Gym

The newly renovated Lincoln University Gym has modern facilities including a well-equipped gym, fitness classes, yoga, a bouldering wall, circuits, fitness assessments and programming, squash, tennis, competitive and social sports and coaching of basketball, netball, rowing and rugby. Best of all membership is already included in the Student Services Fee.

Transport

Parking is free at Lincoln and we encourage ride-sharing, with premium spaces reserved for those who choose to carpool. If you have an electric vehicle, we have several car charging stations. Cycling or scootering is another great transportation option. There are electric charging stations for e-bikes and e-scooters, as well as cycle stands conveniently located around campus. And the Lincoln township and shops are only a short walk away.

Looking after international students.

For any international student, attending university in a foreign country can be a challenge to say the least. At Lincoln, we understand what you're going through and have special support options to help you feel settled and at ease.

LUSA. They're for you.

Lincoln University Students' Association are the people who make student life the best it can be. Independent from the university, they offer impartial advice and look after your student rights. LUSA is committed to the Treaty of Waitangi and they help represent our Māori students at Lincoln. Apart from that they organise awesome and affordable events from lunchtime sausage sizzles to the end of year Barn Dance.

Read it in RAM.

Lincoln's entertaining and essential student magazine. It's your monthly fix of satire, legend, inside word and even the occasional serious and factual article. Don't miss it.

Great care for little ones.

Lincoln's philosophy of helping people grow also extends to our fantastic childcare centre. We create an environment that promotes wonder and play as central to learning. Children of all cultures love it here, which makes it much easier for their parents to concentrate on studying.

Find out more at lucc.lincoln.ac.nz

Building new connections.

Where there are university students there are also cafés and bars. And in our case, they're all well worth a visit or two. Whether you're after a coffee to get your brain going or you're looking for a place to unwind after a busy day studying, there are plenty of places to relax or build new connections.

This way up.

Need a bit of pointing in the right direction? Talk to us for career and employment advice. From career possibilities to finding a part-time job while you study or for employers wanting to recruit students and graduates, we're here and ready to help.

- 1 The LU Early Childhood Centre has been part of the Enviroschools Programme since 2013.
- 2 Strong ties to industry means real world experiences for students.
- 3 Lincoln Tramping and Climbing club, one of over 30 clubs and societies at Lincoln.
- 4 LU International and Cultural Society club members taking in the sights and sounds of Canterbury.
- 5 Mrs O's Café & Bar on campus includes bar facilities and is a great place for a catch-up.
- 6 Lincoln University offers a number of sports teams and clubs to participate in.



Great futures grow at Lincoln



Choosing the best university for you is especially important when you are about to embark on your postgraduate studies. Take a look at some of the most popular reasons postgraduate students choose us.



01.

Great futures start here.

We believe the secret to an outstanding future is starting in the right place today. At Lincoln, you'll enjoy the perfect balance of credibility, experience and future-focus in a size that works for you.

02.

World's 17th best small university*

We keep pace with the very best. Lincoln University is recognised around the world as an outstanding small university that delivers quality learning and achieves exceptional results.

*QS World University Rankings 2022

03.

More contact with supervisors.

Our staff pride themselves on always being available to talk to students. Our open-door policy is there to give you support and help you get the most from your postgraduate studies.

Find out more here: research.lincoln.ac.nz/find-a-researcher-supervisor

04.

Leaders in research.

Through our own research, as well as our collaborations with the world leading research institutes such as Plant & Food Research and AgResearch, we have more academics producing more world-class research than any other New Zealand university relative to size.

05.

Being small makes a big difference.

We're New Zealand's smallest university, and that's a huge advantage. You enjoy a more personal learning environment and much more face-to-face contact with lecturers and staff members. Plus, Lincoln's village atmosphere means a real sense of community and more working together among students.

06.

The grass is greener.

At Lincoln, we are careful to avoid stretching ourselves across everything. Rather, we put our resources into what we truly excel at. Our history is land-based and that's where our future lies. If yours does too, you're in the right place at Lincoln.

07.

A qualification that works.

From Agribusiness to Landscape Architecture, Viticulture and Oenology to Tourism, Lincoln offers a wide range of postgraduate qualifications that work today and are ready for tomorrow.

Lincoln offers a full range of qualifications including:

- Graduate Certificates and Diplomas
- Honours
- Postgraduate Certificates and Diplomas
- Research and Taught Master's
- PhD

08.

Good for the planet.

So much of what we do at Lincoln University involves land and how we treat the planet. Our world-leading research includes ground-breaking innovations in decreasing emissions, alternative fuels and sustainable tourism. And through the Sustainable Action Group for our Environment (SAGE) and the Lincoln Environmental Organisation (LEO), we have a group of passionate staff and students that work to make sure our campus is as sustainable as possible.

09.

Our history, your future.

Lincoln is the Southern Hemisphere's oldest agriculturally-based university. Our story began with farming and as New Zealand and the international economy grew more diverse, we kept pace.

Today we are uniquely placed to offer relevant learning informed by the past with a vision for the future.

Global reach & relevance

Why do students from all over the world flock to study at Lincoln University year after year? It might have something to do with our long list of international credentials:

17th
rated for small universities in the world*



*2022 QS World University rankings

1

Lincoln is the only New Zealand university ranked in the UI Green Metric World University Rankings (2018).

1

Lincoln University has ranked first in the Tertiary Education Commission's Performance-Based Research Fund (PBRF) results which measures the average quality scores of active researchers per postgraduate and final year undergraduate students.

1

Lincoln is the top ranked agriculture-based university in the Southern Hemisphere.

2

Lincoln is the only New Zealand university with membership in two elite university alliances in Natural Resource Management, Agricultural and Forestry Sciences, Life Sciences, Food Science and Environmental Science:

- EuroLeague of Life Science
- Global Challenges University Alliance

18

Lincoln is ranked 17th in the world for all small universities. (QS rankings 2022)

100

Lincoln is ranked in the top 100 in the world for all agriculture-based universities. (QS rankings 2022)



Highly recognised by Government and industry.

Lincoln University has always had a close relationship with New Zealand industry and national development. And that is especially so today.

Lincoln is recognised by professional bodies in New Zealand and around the world, and our graduates are always in demand.

World class research facilities.

By collaborating with the world's best research facilities and universities, it's no wonder Lincoln is renowned for its research.

Yili Innovation Centre

Yili, one of Asia's largest dairy companies, established its innovation centre at Lincoln's campus in 2015. We work closely with them in researching all facets of dairy, from production to final consumer products.

Faculties, research centres and farms

Research at Lincoln University is conducted across three faculties (Agribusiness and Commerce; Agriculture and Life Sciences; and Environment, Society and Design), and several centres of excellence and research centres.

To conduct and demonstrate research for the benefit of the primary sector, Lincoln also operates two dairy farms, a small high country run, irrigated and dryland pastures, a vineyard, hops garden, horticultural research area and plant nursery.

➔ For more information on our research facilities and partners, see pages 29–35.

Small in numbers, big in performance.

Lincoln is the smallest university in New Zealand, based on the number of students. But when it comes to student performance, we come out on top.

- Highest percentage of Masters and PhD students in New Zealand: 21%
- Best lecturer to student ratio in New Zealand
- New Zealand's most successful research university*

*In research income per-full time academic staff member.

It pays to specialise.

Lincoln focuses on agriculture, food and the whole value chain, including the environment, sustainable development, production, processing, supply chain, marketing, trade, and the end user.

That focus includes land planning and sustainable development – landscape architecture, environmental planning, land and property management, tourism and recreation management.

What does that add up to? Postgraduate students who are true experts in their chosen fields.

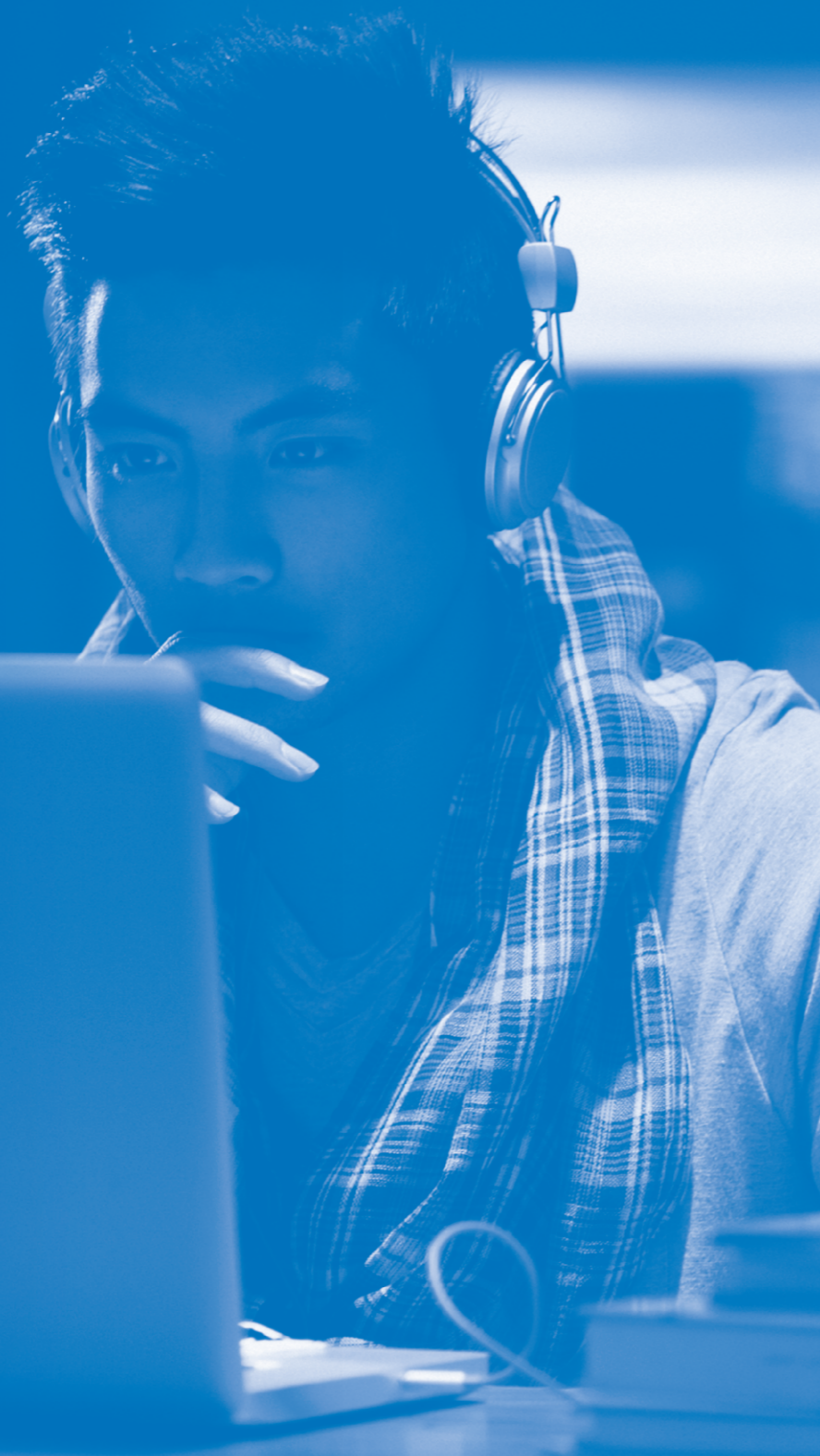


Studying a Taught Master's at Lincoln was a great opportunity to further my education at such a small cost.

Jemma Ramsey
Master of Tourism Management



Postgraduate Study



Why postgraduate study?

There's no doubt about it; studying for a higher qualification demands time, expense and effort in large quantities. But the career opportunities you'll enjoy as a result well and truly prove the value.

Postgraduate study lets you pursue a chosen topic in even greater depth or to specialise after you complete a generalist degree. You'll develop transferable and technical skills, work closely with professionals in your field and develop valuable networks. Or if you're thinking of a career change, postgraduate study can add to your skills and take you in a new direction.

And with our land-based specialisation, a postgraduate qualification from Lincoln University will help you stand out in virtually any job market.

Why postgraduate study at Lincoln?

Postgraduate students at Lincoln benefit from an environment that challenges and rewards in many ways. Within an individually designed programme, we help you to reach new levels of thinking, study and research.

You'll work closely with your supervisory research team to identify your goals and monitor your progress. And you'll have plenty of contact with industry specialists.

Lincoln emphasises strong links with industry, commercial and 'real world' applications. Our campus is placed amongst a cluster of research organisations such as Plant & Food Research, Manaaki Whenua Landcare Research, AgResearch and DairyNZ.

Together with Lincoln University, these companies founded our renowned Blinc Innovation research facility. We actively promote collaborative research projects with these and other organisations, and consult them on course content, teaching and research. Lincoln also

has a range of research centres and companies on campus.

In fact, Lincoln is so immersed in land-based learning we have our own commercial farm, putting practical techniques into practice.

And it doesn't stop here in New Zealand. Our postgraduates conduct research as far away as Norway and California.

Each year, research students have the opportunity to take part in the Three Minute Thesis Competition, which allows them to broaden their networks and gain valuable practice in communicating their work clearly and concisely to a general audience.

We have a PhD student networking group on campus where students get together regularly to meet students from other faculties and research centres.

Top reasons for postgraduate study

- 1 Develop specialist expertise in an area that allows you to make a positive impact on the world.
- 2 Gain industry connections throughout your study and launch your career from much higher up the ladder.
- 3 Stand out from the crowd – many industries now prefer candidates with postgraduate qualifications.
- 4 Learn from expert academic staff who are the best in their field.



Areas of specialisation

Our areas of specialisation are designed to help you tailor your learning to your ambitions. A qualification from one or more of these areas will give you the skills to grow a bright future for yourself and those around you. It's a forward-thinking approach to fit today's world.



Agriculture, Horticulture & Viticulture

Develop the expertise to harness the value of the land and become highly sought-after as an industry professional.



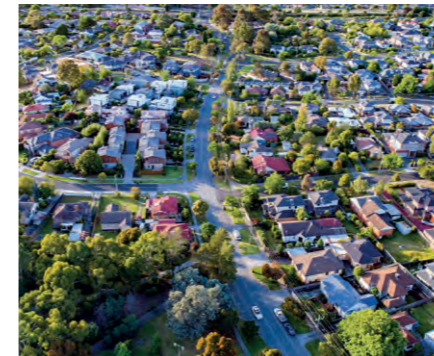
Business

Open yourself up to a world of business opportunities in the land-based industries, which are as diverse as agri-foods, tourism, farming and international markets.



Environment

Understand the big picture and gain the advanced knowledge and skills to make a real difference to the complex issues facing the planet today.



Property & Valuation

Gain a strong edge over your competitors when seeking employment. Our postgraduate programmes are some of the best in the world.



Sport & Recreation

Advance to a senior level in the sport and recreation sector. Take advantage of Lincoln's practical approach and close connections with sporting organisations.



Food, Wine & Beer

Develop advanced skills in food, wine or beer production that will prepare you for fulfilling career opportunities all over the world.



Foundation & Pathways

English for Academic purposes (EAP) provides skills necessary for study at postgraduate level and our Graduate Certificate in Academic English (GCAE) is specifically aimed at international students wanting to enter postgraduate study.



Landscape Architecture

Take your design skills and knowledge to the highest level. Learn from the world's best as you prepare to be in high demand as a landscape architect, both locally and internationally.



Science

Gain the cutting-edge skills to make a difference to the sustainable management of land, water and air - fields that are of crucial importance in today's world.



Tourism

Gain an advanced understanding of the factors involved in the effective management of the tourism sector. As the industry rejuvenates, qualified professionals will be needed to lead the way.



I especially enjoyed practical and lab work, and Lincoln's state-of-the-art facilities are amazing. The lecturers are welcoming and have an open door policy, which makes learning easier and takes the pressure off.

Academically, Lincoln has helped with my lab skill confidence and socially, the networks I have formed will help a lot with my career progress.

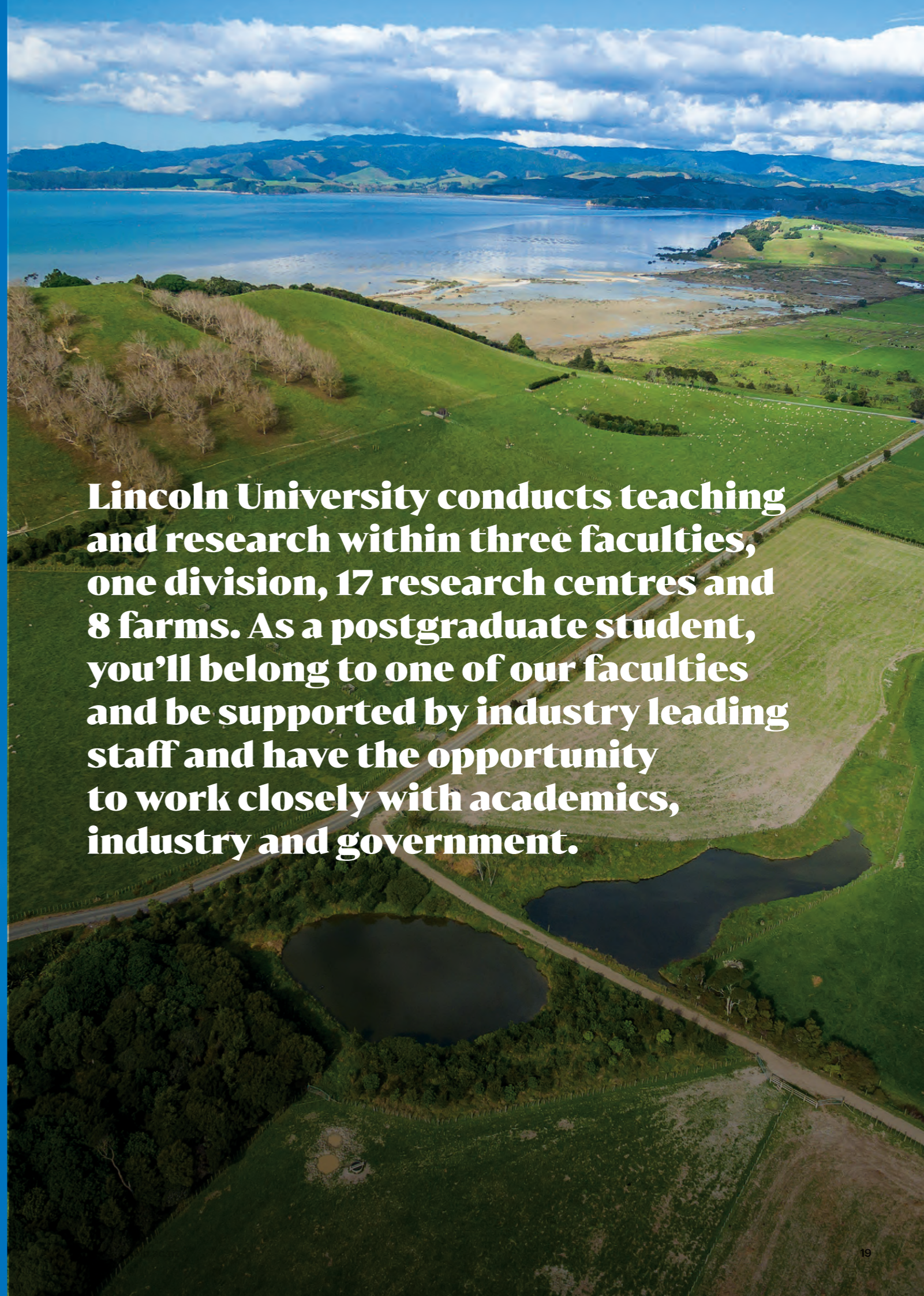
Ishaku Lemu Haruna
PhD



Our Faculties



Lincoln University conducts teaching and research within three faculties, one division, 17 research centres and 8 farms. As a postgraduate student, you'll belong to one of our faculties and be supported by industry leading staff and have the opportunity to work closely with academics, industry and government.



Faculty

Agribusiness & Commerce



Lincoln University is proud to be at the forefront of sustainable business, through the teaching and research of our Faculty of Agribusiness and Commerce.

The Faculty of Agribusiness and Commerce emphasises knowledge creation in order to develop outstanding graduates who can apply what they have learnt to increase productivity, commercialisation and sustainability in their workplace environment.

The faculty is divided into four departments:

- Agribusiness and Markets
- Financial and Business Systems
- Global Value Chains and Trade
- Land Management and Systems

The faculty's postgraduate programme provides a wide range of courses each semester, emphasising both research and practice. It has an active research programme and the proven ability to work closely with industry, government, professional bodies, and end users. The Lincoln University Centre for International Development is the research centre that is associated with this faculty (find out more on page 28).

Agribusiness & Commerce working together

Lincoln's Faculty of Agribusiness & Commerce aspires to be Australasia's premier educator in these fields and we place ourselves at the heart of the value chains that underpin New Zealand's economy.

Lincoln connects people and businesses with studies that cover economic, social and biophysical elements. Our global outlook and reach are core themes.

The strong domestic industry relationships through research, job placement and interaction with students continue to flourish. We collaborate with the likes of Fonterra, the NZX, AgResearch and DairyNZ to name just a few.

Internationally, we have a presence everywhere from the Yunnan Agriculture University in China to the Australian horticulture industry.

Welcome to the Faculty of Agribusiness and Commerce. Our portfolio of postgraduate programmes, complimented by staff and students from a wide range of countries, will set you up for your next career move.

Hugh Bigsby
Dean of Agribusiness & Commerce Faculty

Faculty

Agriculture & Life Sciences



Lincoln is focused on improving productivity in the agricultural sector, while ensuring the environment is protected. We also focus strongly on protecting New Zealand's unique flora and fauna.

The Faculty of Agriculture and Life Sciences is made up of four departments:

- Agricultural Sciences
- Pest-Management and Conservation
- Soil and Physical Sciences
- Wine, Food and Molecular Biosciences

We operate two dairy farms, a small high country run, irrigated and dryland pastures, a vineyard, hops garden, horticultural research area and plant nursery.

And are supported by five research centres embedded in the faculty:

- The Centre for Advanced Computational Solutions
- The Centre for Food Research and Innovation
- The Centre for Soil and Environmental Research
- The Centre for Viticulture and Oenology
- The Centre for Wildlife Management and Conservation

Lincoln's Faculty of Agriculture and Life Sciences directs research and education toward improved productivity for the agricultural sector that also protects the environment.

We have strong relationships with many external stakeholders, including some of New Zealand's biggest companies.

As a result, we are constantly up-to-speed with industry trends. This means they can develop and tweak the curriculum to ensure our graduates are receiving leading edge, research-led teaching.

Examples of this are programmes such as the Master of Pest Management and Master of Wine and Viticulture.

The faculty makes strong contributions to MBIE programmes, for example: Advanced Computed Tomography scanning technology has been established, facilitating research into neurological diseases of humans and animals including Batten disease, in collaboration with the University of Otago.

Welcome to the Faculty of Agriculture and Life Sciences. We hope you will enjoy developing your potential, supervised by excellent academics and solving the problems facing a resource constrained world with a growing population.

Jim Morton
Dean of Agriculture and Life Sciences Faculty

Faculty

Environment, Society & Design



The Faculty of Environment, Society and Design is focused on how humanity takes care of the land, water and people, as encapsulated by the Māori value of Kaitiakitaka.

This is achieved through designing, planning and managing, through consideration of activities that produce wellbeing, and above all, ensuring thinking critically about the impact of everything that society does.

They have strong connections with a range of external stakeholders, in particular the New Zealand Planning Institute (NZPI) and New Zealand Institute of Landscape Architects (NZILA) who accredit several of the faculty degrees in planning and landscape architecture. Additionally, all of the faculty's programmes draw on trained professionals for industry expertise from organisations such as the Department of Conservation, Tourism Industry Aotearoa, Recreation Aotearoa and the New Zealand Parks Agencies Managers' Group (NZPAMG). They also consult regularly with professionals through advisory boards working in natural disaster management, water management and computer science.

The faculty has pioneered and maintained collaborative innovative degrees through teaching partnerships that draw on the expertise of Lincoln University and partner universities (the University of Canterbury and the University of Natural Resources and Life Sciences, Vienna (BOKU)).

All of the faculty's teaching programmes draw on ground-breaking and influential research which spans diverse disciplines including geography, sociology, psychology, exercise science, computer science, Māori studies and engineering and have achieved international rankings in leisure and hospitality and sport science.

Our focus on environmental and social issues means postgraduate students tackle some of the large global issues currently facing us. Our diverse range of study options ensures students find something that interests them, as well as leaving with a qualification that improves their job prospects.

Roslyn Kerr
Professor, Faculty of Environment,
Society & Design

Division

University Studies and English Language



If you need to improve your English or study skills before beginning a postgraduate qualification, the University Studies and English Language Division offers an excellent foundation.

The Graduate Certificate in Academic English, which can be completed in six months of full-time study, is ideal preparation for postgraduate work. As the only language-bridging programme of its kind offered by a New Zealand university, it will help you become eligible to enter a postgraduate programme and demonstrate that you meet the English language requirements for admission (equivalent to IELTS 6.5).

In addition to cultivating your English Language skills, the programme will also help to develop your academic potential by familiarising you with the resources for your intended area of postgraduate study.

Intake dates are available each month from January to November, so you can begin at a time that suits you.

If you don't yet meet the required English Language admission standard for the Graduate Certificate in Academic English, you can enrol in Lincoln's English Language programme first.

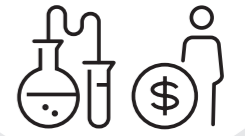
As the only language-bridging programme of its kind offered by a New Zealand university, it will help you become eligible to enter a postgraduate programme and demonstrate that you meet the English language requirements for admission (equivalent to IELTS 6.5)

Research

Research at Lincoln

Most successful
research university

in New Zealand in terms of research income per full-time academic staff member



Research and innovation are essential to universities. They enrich learning for our students and deliver new knowledge for society and business.

Lincoln University's research has contributed to land-based sectors and it's the application of the research that has the potential to solve many of the great 'real world' problems.

We employ strict codes of practice and commit to sustainable use and protection of the environment in everything we do.

Research conducted at Lincoln has included developing lucerne and subterranean clover grazing management practices to drive on-farm animal productivity and reduce environmental impacts, testing the benefits of altitude training to help athletes perform better, finding ways for viticulturists to adapt to climate change

and studying how to breed more environmentally-friendly cows.

Graduate students at Lincoln are central to the University's research efforts. Whether you're ready for a PhD or considering honours or a masters, we look forward to supporting you.

Find out more at research.lincoln.ac.nz



Centres of Excellence



Lincoln University's Centres of Excellence intersect Agriculture, Food, Conservation, Environment, Tourism, Recreation and Mātauraka Māori.

Each centre focuses on issues of strategic importance to Aotearoa New Zealand and responds to a need for greater innovation, productivity, resilience and sustainability. Their work will confront challenges facing society and respond to New Zealand's need for greater innovation and sustainability across the broad spectrum of land management.

Lincoln University's research expertise in a wide range of land-based disciplines means it is uniquely positioned to add value in these areas, and the Centres of Excellence present an exciting opportunity for higher learning and research opportunities.

Food for Future Consumers

The Food for Future Consumers centre focuses on strengthening the links between provenance (such as place of origin, authenticity, land and agroecosystems) and food qualities (such as production values, composition and preference). The research will capture a greater proportion of the value of the products and foods that meet individual standards and expectations, whether these be about nutrition and health, quality, or sustainability.

Designing Future Productive Landscapes

The main objective of the Designing Future Productive Landscapes centre is to conceptualise, design, create, implement and test alternative landscape systems that improve agroecosystems and other productive ecosystem-societal services. This includes timely implementation models that utilise mātauraka Māori to support and sustain Te Taiao, building ecological, economic, health, social and cultural wealth.

Sustainable Tourism for Regions, Communities and Landscapes

Sustainable Tourism for Regions, Communities and Landscapes is a multidisciplinary research centre hosted in the Faculty of Environment, Society and Design. Its mission is to generate and support projects that will contribute to the development of a new blueprint for sustainable regional tourism in New Zealand and globally.

One Biosecurity Research, Analysis and Synthesis

The Centre for One Biosecurity Research, Analysis and Synthesis (COBRAS) is the first scientific centre in the world dedicated to one holistic biosecurity approach. It aims to overcome the limitations of siloes that have traditionally existed within the sector. COBRAS works to strengthen interconnections between animal, plant, and environmental health to deliver innovative strategies that will prevent and mitigate future biosecurity risks in the agriculture, forestry and environment industries.

Transformative Agribusiness

The Centre of Excellence, Transformative Agribusiness, is dedicated to enhancing sustainability in the food and fibre sectors. It supports the development of new products and ways of working that increase economic and social value while reducing the environmental impacts of agribusinesses. Drawing on international best practice, the centre brings together researchers, policymakers and industry to assess the feasibility of transformative agribusiness in Aotearoa New Zealand and develop tangible solutions.

Research centres

To help you achieve more in your chosen field, Lincoln University hosts a variety of centres to deliver ground-breaking research and education. You'll benefit from unique learning experiences, tackling practical issues in New Zealand's most research-intensive university.

In fact, Lincoln students and lecturers are continuously engaged in contributing towards solving practical issues. And the results add value across many land-based sectors for leading agribusinesses and even other universities.

Lincoln's culture of collaboration is one of the hallmarks of our success. We help organisations succeed to the long-term benefit of New Zealand as a whole.

Centre for Land, Environment & People (LEAP)

LEAP is an interdisciplinary hub of research relating to the sustainability of societies. Combining scholarly understanding and problem solving, the Centre provides a public platform to share high-quality research at Lincoln University to extend the collective impact of research, contribute to public debate, and promote the wellbeing of the environment, society and its diverse cultures.

Find out more at www.lincoln.ac.nz/leap



Centre for Advanced Computational Solutions

The Centre conducts research in computational and mathematical sciences relevant to environmental management, molecular biology, biophysical sciences and engineering (biotechnology). Its aim is to embody the best aspects of both academic and industrial cultures, allowing them to uphold scientific ideals while at the same time demonstrating an awareness of real world constraints. There are exciting opportunities for postgraduate students to formulate challenging research questions and answer them in a scientifically rigorous manner.

Find out more at www.lincoln.ac.nz/cfac



*Performance-Based Research Fund. Measures the average quality scores of active researchers per postgraduate and final year undergraduate students

Centre for Soil & Environmental Research

This facility conducts scientific research to advance sustainable production and environmental protection. Areas of expertise include soil and water chemistry; nitrification inhibitor use; mitigation of nitrous oxide greenhouse gas emissions and inventory measurements; land treatment of organic wastes; soil and environmental physics; and farming and the environment.

Find out more at www.lincoln.ac.nz/cser



Research partners

Blinc Innovation

Centre for Wildlife Management & Conservation

With a vision for increased recovery of native biodiversity over extended areas of New Zealand, its research provides new, effective and humane ways of reducing invasive pest populations and monitoring biodiversity. Through collaboration with communities, the centre provides international leadership in pest management tools and strategies to enhance conservation efforts in New Zealand and around the world.

Find out more at www.lincoln.ac.nz/cwmc



Lincoln University Centre for International Development

They focus on the management of agricultural and natural resources in developing and emerging economies, so that:

- Poverty can be reduced through pro-poor and sustainable growth of the rural economy.
- Rural livelihoods can be improved, the development of rural communities fostered, and the sustainable use of natural resources encouraged.

Find out more at www.lincoln.ac.nz/lucid



Centre for Food Research & Innovation

Established as a centre of food science excellence to promote innovation within the national and international food sector. With a combined land and food focus, Lincoln attracts internationally renowned researchers to utilise their theoretical knowledge of science to the applied benefit of the food industry.

Find out more at www.lincoln.ac.nz/cfri



Centre for Viticulture & Oenology

The centre acts as a focus for New Zealand and global interdisciplinary research on wine from soil to glass. Its aim is to increase value of the New Zealand wine industry through improved understanding of the relationships between environment, viticultural practices and wine quality. It also provides the expertise New Zealand demands to produce high quality wine. We train people with innovative vineyard management, wine-making and business skills, and research the social and cultural aspects of wine production and consumption.

Find out more at www.lincoln.ac.nz/cvo



Seed Research Centre

Established within the Bio-Protection Research Centre, now a nationwide centre known as Bioprotection Aotearoa, with its Lincoln experts located in the Faculty of Agriculture and Life Sciences, this facility provides seed research and training, as well as product development and commercialisation. The centre's vision is to ensure excellence and relevance in seed science and technology research, product development and postgraduate studies for the land-based industries and nature conservation. Canterbury is the heart of the New Zealand seed industry, and New Zealand's leading seed researchers and industry partners are on hand to assist.

Find out more at www.lincoln.ac.nz/src



Agribusiness & Economics Research Unit

The core mission of the AERU is to exercise leadership in research for sustainable well-being. Our vision is to be a cheerful and vibrant workplace where senior and emerging researchers are working together to produce and deliver new knowledge that promotes sustainable well-being to make a difference through their research. Our research focuses on economic, resource, environmental and social issues. And we offer supervision for postgraduate students and even co-funding too.

Find out more at www.lincoln.ac.nz/aeru



For Lincoln University, helping the businesses and our communities that are connected with the land – from agribusiness to tourism – share in the brightest possible future is behind our core purpose: unlocking the power of the land to enhance lives and grow the future.

To achieve this, our focus is on building partnerships with some of the country's leading agribusinesses and with Crown Research Institutes and other universities. By sharing practical experience, leading-edge research and innovative techniques, we are helping New Zealand businesses to enjoy very real advantages in the global market.

Biological Husbandry Unit – The BHU Organic Training College

This College was established to deliver hands-on programmes in organic, ecological, permanent and related agricultures and horticultures. It boasts a training college, farming centre and its own farm.

Find out more at www.bhu.org.nz



Lincoln Agritech

Lincoln Agritech is a leading edge research and development company with a track record in applying new and innovative engineering and science technologies in the primary, industrial and environmental sectors. From fundamental research assisting regional councils with groundwater quality, to innovative product development, this independent research organisation is wholly owned by Lincoln University.

Find out more at www.lincolnagritech.co.nz



Blinc Innovation

They focus on the management of collaboration between research institutions, industry and Lincoln University, all working together to transform the performance of New Zealand's primary sector.

Blinc Innovation has a range of dedicated resources and facilities, and draws on over 900 researchers and industry professionals. Already, it has enabled a new model of collaboration in the research space and is doing exciting work to meet the future challenges within the primary sector. Or in other words, a world-class centre for education and practical change.

Find out more at www.blincinnovation.com



National research partners

More academics producing more world-class research than any other New Zealand university relative to size



Joint partnerships and collaborations developed between New Zealand Universities, Crown Research Institutes (CRIs), regional councils and major stakeholders to address the need for coordination of research teaching in key areas. These are the engine rooms of Lincoln University's growing research capacity and capability through post-graduate programmes.

Waterways Centre for Freshwater Management

The Waterways Centre is a collaboration between the University of Canterbury and Lincoln University. The main focus is on improving water resource management through the development of a workforce with technical, research and management skills. The Centre delivers postgraduate papers in freshwater management with qualifications in Water Resource Management. Much of the student-led research projects are funded and range from studies of Canterbury lake water quality to meltwater ponds in Antarctica.

Find out more at www.waterways.ac.nz



Bioprotection Aotearoa

Bioprotection Aotearoa is a Centre of Research Excellence (CoRE), funded by the Tertiary Education Commission and drawing on the expertise of 11 partner universities and CRIs. Its mission is to train the next generation of bioprotection researchers and to deliver world-class research that protects the productive and natural landscapes of Aotearoa New Zealand.

Find out more at www.bioprotection.org.nz



Joint Postgraduate School: Food Transitions 2050

Lincoln University co-hosts a joint postgraduate school as part of a new strategic partnership initiative known as Food Transitions 2050.

Food Transitions 2050 is delivered by five research organisations located in the Canterbury region: AgResearch, Manaaki Whenua - Landcare Research, Plant & Food Research, Lincoln University and the University of Canterbury.

The school is a virtual community of PhD students and their university and Crown Research Institute (CRI) supervisory teams, conducting cross-disciplinary research to support the transition of our regional, national and international food systems to a more sustainable state.

Find out more at foodtransitions2050.ac.nz



Lincoln University has been a great place to learn and grow.

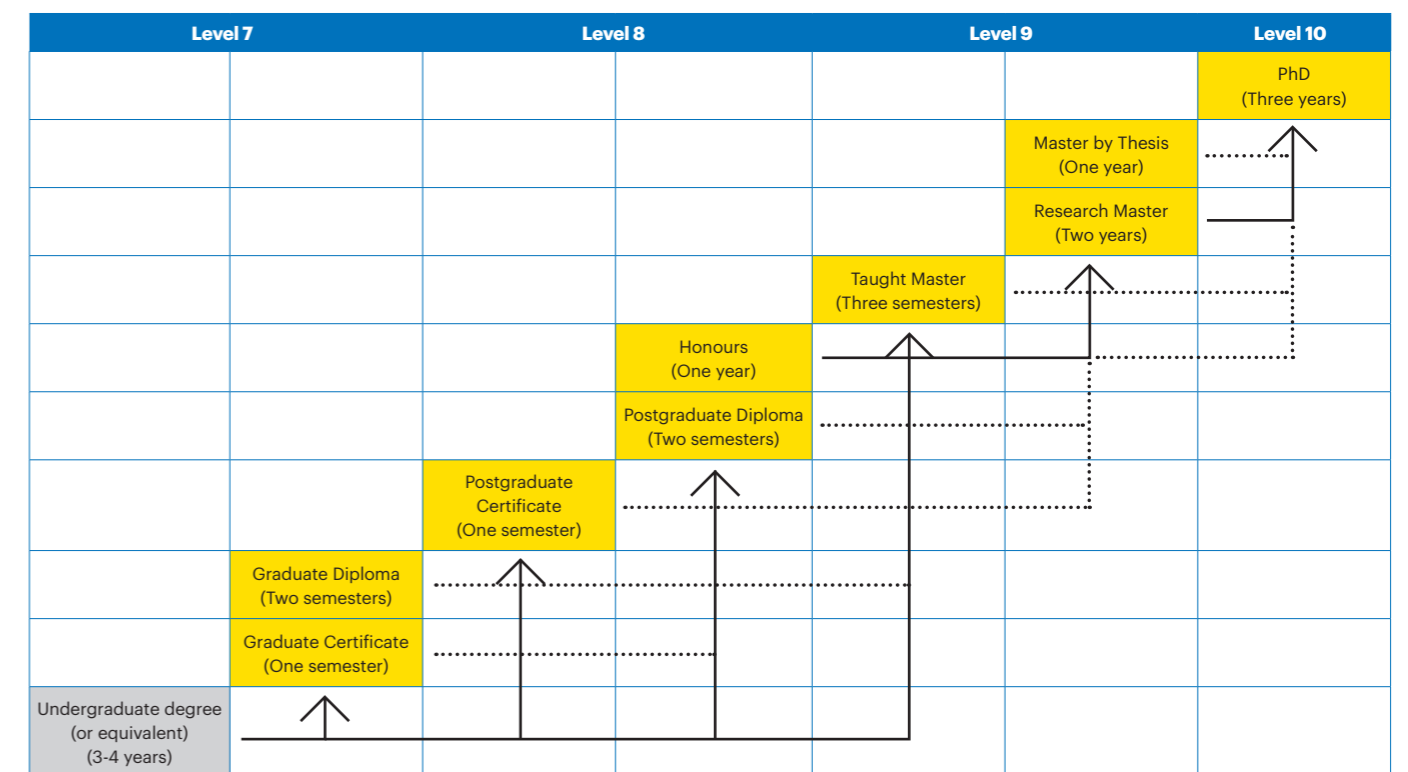
Mohamad Odeh
PhD. student



Postgraduate at Lincoln

Postgraduate pathways

Perhaps the most exciting thing about postgraduate study is the sheer range of promising options to choose from. Lincoln University offers the full complement of specialist programmes at postgraduate level, from Graduate Certificates through to a PhD.



* Some programmes require a relevant academic background. For more up-to-date entry requirements, refer to www.lincoln.ac.nz

——— Entry into this qualification
 Possible entry into this qualification

Graduate and Postgraduate Certificates and Diplomas

These allow you to transfer from another area of study to gain skills in an area that interests you, or to simply build on the degree you already have.

Honours Degrees

A Honours degree allows those with a B+ or higher average in the 300 level courses, or its equivalent, the possibility of an extra year of study at the end of their undergraduate degree to further develop their education within their chosen area of study.

Masters' Degrees

Our highest pre-doctorate qualification. Develop a thesis and/or study in your chosen area. A master's degree can be research based, taught only or both research and taught based.

Doctor of Philosophy (PhD)

Take your education to the very highest level. A PhD can be undertaken in any of the disciplines we offer postgraduate studies. This is a further three to four years study in addition to a master's or honours degree.

- Postgraduate Certificate in Land and Society
- Postgraduate Certificate in Parks, Recreation and Tourism.

Postgraduate diploma programmes

- Postgraduate Diploma in Agricultural Science
- Postgraduate Diploma in Applied Science
- Postgraduate Diploma in Commerce
- Postgraduate Diploma in Environmental Management
- Postgraduate Diploma in Horticultural Science
- Postgraduate Diploma in Land and Society
- Postgraduate Diploma in Parks, Recreation and Tourism

Honours

A postgraduate honours degree gives you an extra year of study at the end of your undergraduate degree to further develop your understanding in your chosen field of study and typically involves a research component.

Honours is available by application only, after the completion of an approved undergraduate degree with a B+ or higher average in the 300 level course.

Honours Programmes

- Bachelor of Agriculture Science with Honours
- Bachelor of Commerce with Honours
- Bachelor of Environmental Management with Honours
- Bachelor of Landscape Architecture with Honours
- Bachelor of Science with Honours
- Bachelor of Sport and Recreation Management with Honours
- Bachelor of Tourism Management with Honours
- Bachelor of Viticulture and Oenology with Honours.

Master's Degrees

A master's degree qualifies you to apply an advanced body of knowledge in a range of contexts for research, further learning, professional practice or scholarship.

Outcomes at master's level are markedly in advance of undergraduate study and require individuals to engage in significant research and/or advanced scholarship.

A Master's degree is focused on either one discipline or a coherent programme of study. They may be undertaken by taught courses or research, or both.

180-credit taught masters' programmes

Course-work masters' degrees are designed for students to advance knowledge, professional development, and their career. Study is completed over three semesters (12–18 months).

- Master of Applied Computing
 - Master of Business (Finance)
 - Master of Business (Global Management and Marketing)
 - Master of Environmental Policy and Management
 - Master of Fintech and Investment Management
 - Master of Landscape Architecture (includes dissertation)
 - Master of Management in Agribusiness
 - Master of Pest Management
- Majors:**
- Plant Pest Management
 - Vertebrate Pest Management
- Master of Precision Agriculture
 - Master of Professional Accounting (CPA) – (Pathway Certificate available for non-accounting backgrounds)
 - Master of Planning (includes dissertation)
 - Master of Science in Food Innovation
 - Master of Sport and Recreation Management
 - Master of Tourism Management
 - Master of Wine and Viticulture.

120-credit and 240-credit research masters' programmes

If you're interested in research or building a further academic career, a research master's degree is ideal.

In most cases you need to complete 240 credits, 120 credits of taught courses and a thesis worth 120 credits – a total of two years of academic and research study. It is also possible to complete a 120 credit research master's programme. After completing a research master's programme, you can go on to apply for PhD study.

- Master of Agricultural Science
 - Master of Applied Science
- Specialisations:**
- Environmental Management
 - International Rural Development
 - Land and Society
 - Parks, Recreation and Tourism
- Master of Commerce (Agriculture)
 - Master of Commerce and Management
 - Master of Horticultural Science
 - Master of International Nature Conservation
 - Master of Landscape Architecture
 - Master of Natural Resources Management and Ecological Engineering
 - Master of Science
- Streams:**
- Biochemistry
 - Conservation & Ecology
 - Environmental Science
- Master of Science (Plant Breeding)

Your master's research proposal will be read and commented on by all members of the supervisory research team, and submitted for approval to the faculty research committee.

Once finalised you will present a seminar on the proposed work. When your proposal has been approved you can apply for research funding (a preliminary small allocation may be made earlier to cover expenses such as photocopying, printing etc.).



Throughout your thesis/research you will work closely with your supervisory research team.

PhD

As a PhD student, you'll belong to one of our faculties and be supported by committed staff, and have the opportunity to work closely with academics, industry, iwi and government and benefit from an environment that challenges and rewards in many ways.

Within an individually designed three-year research programme, not requiring course work, we help you to reach new levels of thinking, study and research and work closely with your supervisory research team to identify your goals and monitor your progress. And you'll have plenty of contact with industry experts and specialists in your area of study.

We also have a PhD student networking group on campus where students get together regularly to meet students from other faculties and research centres.

PhD entry requirements

An appropriate and relevant postgraduate Honours or Master's degree awarded with at least second-class honours, division one or equivalent (a grade average of a B+ or higher).

In addition, your previous qualification must include a significant research component, such as a project, dissertation or thesis, requiring at least 40 credit equivalents of research skills in your previous qualification.

If English is not your first language, you will need to provide evidence that you are able to meet the English language requirements for admission to Lincoln. If you don't currently have this, you can provide it to us later.

Full requirements are here: www.lincoln.ac.nz/entry-requirements

Intake semesters

PhD students can start at any time during the year where there is mutual agreement with your supervisor and you are not restricted to semester starts.

How to apply

The first step is to ensure that you meet the entry criteria. Find out here www.lincoln.ac.nz/phd

Confirm that your research area can be catered for at Lincoln University by checking the list of available supervisors here www.lincoln.ac.nz/supervisors

Begin the application process online: www.lincoln.ac.nz/apply

Postgraduate entry requirements

Postgraduate entry requirements

Programme	Academic Entry Requirements
Graduate Certificate or Diploma	Completion of an undergraduate degree from an accredited higher education institution in New Zealand or an approved equivalent status (ad eundem statum).
Postgraduate Certificate	A relevant degree with at least a B- grade average in the 300 level and final year (full-time equivalent) courses.
Postgraduate Diploma	A relevant degree with at least a B- average in the 300 level and final year (full-time equivalent) courses.
Honours	A relevant degree with at least a B+ grade average in your 300-level or higher courses and final year overall (full-time equivalent). NB: For the Bachelor of Agricultural Science degree, entry into Honours is by invitation only in the fourth year.
Taught Masters	A relevant degree with at least a B grade average in your 300-level or higher courses and final year overall (full-time equivalent).
Research Masters by Thesis (one year)	An appropriate and relevant postgraduate honours degree awarded with at least second class honours, division one, or equivalent (B+ grade average or higher). In addition, a postgraduate diploma can also be used as entry to a Research Masters by Thesis.
PhD	An appropriate and relevant postgraduate Honours or Master's degree awarded with at least second class honours, division one or equivalent (a grade average of a B+ or higher). In addition, your previous qualification must include a significant research component, such as a project, dissertation or thesis, requiring at least 40 credit equivalents of research skills in your previous qualification.

English Language requirements

Lincoln qualification	Lincoln University English Language	IELTS (Academic)	TOEFL iBT [^]	Cambridge English: Advanced (CAE) and First (FCE)	Pearson Test of English (Academic)	NZ Certificates in English Language (NZCEL)
PhD Master's Degrees Postgraduate Diplomas Postgraduate Certificates Graduate Diploma (in all disciplines except for Commerce) Graduate Certificates (in all disciplines except for Commerce)	GCAE or LU EL 70%	6.5 overall, with no individual component less than 6.0	Overall score of 80 (with at least 21 in Writing and 18 in Speaking)	Overall score of 176, with no individual component less than 169	58 overall score - with no communicative skill less than 50	Level 5 (Academic or Professional Endorsement)

[^] If supplying a TOEFL test score, please request an original copy to be sent to our institution, code number 9479. Please note the university may request additional evidence of meeting English Language requirements.



Financing your study

Financing your study

250

students per year receive a Lincoln funded scholarship

Scholarships and funding

\$3 million

in Lincoln University-funded scholarships per year

Making the right choice about what to study is even more important at postgraduate level.

For postgraduate students Lincoln offers a comprehensive range of scholarships. Plus, there are external organisations like Crown Research Institutes and Government agencies that offer funding assistance for thesis research. For examples of the many scholarships available and all the details, just visit www.lincoln.ac.nz/scholarships

On average, postgraduate course fees are between \$6,500 and \$10,000 per year for domestic students, and between \$27,000 and \$43,000 for international students. And, as you know, there are other costs to factor in too:

Accommodation at Lincoln University campus

Living on campus usually costs between \$8,000 and \$16,600 a year depending on the type of accommodation you choose.

Student Services Fee

The Student Services Fee, collected each year, is spent on a number of services (such as subsidised gym, healthcare, counselling, clubs and societies, and advocacy and legal advice) that directly benefit students.

Stationery, books and software

Look out for second-hand textbooks and make use of services available through Learning, Teaching and Library. Their website, Te Kete Wānaka, is full of useful information and includes the library catalogue. Check it out at lil.lincoln.ac.nz. The campus bookshop can assist with all your stationery needs. Microsoft Office is provided for use on your own devices and often world-class software will be available free of charge if it is required by your course.

StudyLink

New Zealand domestic students may be eligible for a student loan or allowances to help cover course-related expenses and living costs.

Visit www.studylink.govt.nz to find out more

Field trips and tours

Costs for field trips and tours will depend on your chosen course of study.

Postgraduate research funding

Lincoln University provides up to \$2,000 per year for full-time masters' (one year) and PhD (three years) thesis research.

For some research projects, there may be an additional requirement for operational funding above the money allocated by your faculty.

Because of the practical focus of much of Lincoln University's research, there are many research funding opportunities. Please talk to your supervisor to see if there's one to suit you.

Doctor of Philosophy (PhD) – (International students)

A New Zealand Government funding scheme enables Lincoln University to offer PhD study to international students for the same tuition fees as New Zealand PhD students. To be eligible, you have to reside in New Zealand for the duration of your doctoral programme (apart from temporary absences for the purpose of approved doctoral research).

For more information on current fees go to www.lincoln.ac.nz/fees

Domestic Scholarships

Lincoln University Summer Research Scholarships

Lincoln offers many research scholarships to current students during the summer holiday period. These span a range of disciplines. All the opportunities are detailed on the scholarships database at lincoln.ac.nz

Lincoln University Doctoral Scholarships (Domestic and International)

Doctoral scholarships have been established to help PhD students pursue research at Lincoln University. They cover domestic tuition fees, plus a \$28,000 per annum stipend. Doctoral scholars must be registered full-time PhD students.

Lincoln University – William Machin Doctoral Scholarships for Excellence

The William Machin Memorial Research Fund provides \$28,000 scholarships plus tuition fees for up to three years to Lincoln University students who are New Zealand citizens or permanent residents.

Note: Details referenced correct at time of printing. For up-to-date info, visit www.lincoln.ac.nz/scholarships

Lincoln University Aoraki Doctoral Scholarship for Māori

The Doctoral Scholarship for Māori was established in 2020 to demonstrate the importance of Kaupapa and Rakahau Māori and the importance of supporting Māori students embarking on a doctoral programme. The scholarship covers domestic tuition fees, plus \$28,000 per annum.

BK Otway Education Foundation Doctoral Scholarship

The doctoral scholarship from the BK Otway Education Foundation is available for a full-time doctoral student carrying out postgraduate research in sustainable agricultural or horticultural land management for the benefit of New Zealand. The scholarship provides \$35,000 plus tuition fees.

Lincoln University Research Master's Scholarship

The Research Master's Scholarship is awarded to encourage postgraduate study and research at Lincoln University. The scholarship covers an amount equivalent to the New Zealand student's tuition fee for the research year of a research master's degree programme.

Lincoln University Taught Master's Scholarship

Taught master's scholarships are available to domestic students with a B+ average in the final year of a bachelor's degree. They need to meet specific admission requirements and will be considered for the scholarship when they apply to study. No separate application is required.

For more information visit www.lincoln.ac.nz/scholarships

International Scholarships

Lincoln University is known for being open and welcoming to international students and a wide range of scholarships is available to candidates from overseas.

International Taught Master's Merit Scholarships

International students who qualify for a Taught Master's Merit Scholarship are awarded \$7,000 – \$10,000 (depending on the 180-credit taught master's programme selected) towards the overall cost of their study. Qualifying students must have a B+ average in the final year of a bachelor's degree. There is no separate application required and students will be assessed upon application for study.

Fees

Fees are due the day that your study programme begins, but if you enrol after the first day of the semester, you can provide payment as soon as your enrolment is complete.

International students

International students studying in New Zealand should allow enough time for a student visa application to be issued by the relevant start date.

If you are an international student outside of New Zealand and are studying online, a student visa is not required. Fees should be paid in full by the first day of the relevant semester.

International students enrolled in a full-year course must pay the year's fees at the start of the enrolment period.

Australian students

Australian citizens or permanent residents studying in New Zealand will pay the same fees as New Zealand citizens. If you are studying by distance in Australia, you pay international fees.

You are not eligible to apply for a New Zealand Student Loan or Allowance unless you've been living in the country for at least three years and normally reside in New Zealand.



View current fees at

Domestic
www.lincoln.ac.nz/fees

International
www.lincoln.ac.nz/international-fees



Student Support

LUSA are on your side

Lincoln University Students' Association (LUSA) are here to support all students by providing things you need and want. From coordinating clubs and exciting events to student support services, our Executive is made up of elected students and their job is to make sure they are doing the best by students from first year undergrads to seasoned PhD students.

Helping you get involved

Postgraduate students deserve a social life too. Luckily, LUSA is here to help you meet new people and have fun. And with over 30 clubs and societies at Lincoln, there's something for everyone and plenty of like-minded people to be found. Or if you'd prefer, we can help you start your own club.

Your LUSA representatives

Every year, eight students are elected to form the LUSA Student Executive. They sit on every single committee possible within the university meaning the student voice is well heard. We have a specific postgraduate representative on the Exec whose role is to be the voice of postgraduate students. Get in touch with them for any issue, big or small, and they'll help you get things sorted.

Student Job Search (SJS)

Welcome to your year-round job placement service for all tertiary students looking for work to help keep you afloat. SJS has a huge employer database, both of households and professional organisations that are always looking for students. LUSA can give you all the details and assistance on how to access their service.

Events

LUSA is your go to for events and a great student life whilst studying at Lincoln. They host a range of events that celebrate community, family and diversity on campus. Whatever you're into, LUSA will have something for you. Get involved, follow their social media pages and make sure you get your tickets early, as events do sell out!

Financial Assistance Fund

By now, you'll know it can sometimes be hard to make ends meet when you're a student. LUSA administer a Financial Assistance Fund to assist students struggling financially due to unforeseen and unexpected circumstances. They can help you figure out the best way forward and support you through it.

Don't hesitate to drop in to LUSA to have a chat about it.

Impartial advice and support

We all need someone who can support us now and then. The LUSA support and advocacy service is professional, 100% independent from the university and always confidential. You can be sure the advice they give is always in your best interests. They can help with any number of issues, be that academic, financial or personal.

Additional support

Tenancy issues? Childcare worries? Car troubles? LUSA can help. If something less than great happens during your time at Lincoln, they have the ability to help you get back on your feet.

Student media

RAM is Lincoln's student magazine produced by LUSA. News, gossip, competitions and Flat of the Month; it's a bit of light relief, some call it procrastination, from your studies. Keep an eye out for magazine stands all around campus.

Find us

LUSA, Forbes Building,
Ground Floor, Lincoln University
P: 03 423 0582
E: students@lusa.org.nz
www.lusa.org.nz



Follow us and keep up to date  

Māori and Pasifika support

Māori Students

Nau mai, tauti mai, ki Te Whare Wānaka o Aoraki.

Lincoln University is a great place for Māori students to gain an excellent qualification in a fun, friendly and supportive environment.

More than that, we're committed to helping to develop the next generation of Māori leaders by offering industry-relevant, career-orientated programmes ranging from diplomas all the way to undergraduate and postgraduate degrees.

We have always been about harnessing the power of the land, and we understand:

- how Māori land and primary sector assets are key economic resources for whānau, hapū, iwi and Māori communities; and
- Māori have a growing multi-billion dollar economy and need a diverse, specialised workforce to manage their significant assets for future generations. Lincoln is able to support and grow those people.

We offer a values based programme of manaaki (support) for Māori students called Manaaki Tauira that offers academic support, internships and practical work opportunities.

Te Awhioraki

Te Awhioraki is an association which represents all Māori students on campus and is managed and run by Māori students themselves. Te Awhioraki provides social, cultural and academic support to students during their stay at Lincoln. It also organises social events, wānaka and workshops which enhance and promote a Māori identity within the university. Te Awhioraki works alongside the Lincoln University Student Association (LUSA) advocating for students and providing all students with an independent student voice.

Te Awhioraki has a seat on the University Council Committee responsible for Māori development (Ahumairaki) and LUSA Executive thereby providing a strong voice for Māori student issues. Te Awhioraki is also a member of Te Mana Akonga (National Māori Students' Association).

Pasifika Students

Kia orana, talofa lava, malo e lelei, nisa bula vinaka, fakaalofa lahi atu, taloha ni, fakatalofa atu, halo oloketā.

Lincoln University has a longstanding association with the Pacific region and its communities which is supported by the Lincoln University Pacific Island Association on campus and external stakeholders as part of our Motu Working Group. We aim to contribute to the educational and economic aspirations of Pacific people both within New Zealand and in the wider Pacific region.

Pasifika students are able to engage in sporting and social activities on campus supported by the Pasifika Support Coordinator and Te Manutaki - the Māori and Pasifika Team and our Pacific Islands Student Association (LUPISA).



International student support

Leaving your home country to attend university overseas is a huge step, and it's easy to feel a bit confused or lost when you get there. At Lincoln, we understand what you're going through, so we have lots of support for international students on campus. And our friendly staff are here to help you feel settled and at ease.



International Office

The International Office promotes and markets Lincoln University to prospective international students and works with its global network of education agents to provide high quality customer service. They also support students with programme and course advice and help students through the University's applications and enrolment processes. The team is proud to deliver essential pastoral care to international students during their time of study at Lincoln University.

International Student Advisors

The friendly and helpful team who can help you with any issue or concern, whether it's personal, social or cultural. If it's a legal, financial or academic issue, we can point you in the right direction.

Student Administration

Our team is ready to assist you with your study applications, enrolments, medical insurance, graduation, practical work and exam queries.

LUSA

The Lincoln University Students' Association (LUSA) provides representation and support for students. They also organise events and coordinate clubs and sports groups to keep you busy and having fun throughout the year.

Student Health and Support

We know sometimes things can seem daunting, or life can present an obstacle or two. And we really want you to know that we care and you don't have to deal with things alone. So we offer a full range of health and support services available on campus to make sure your time at Lincoln is a happy one.

Chaplaincy

Many international students come from a faith background, such as Christian, Muslim, Hindu, Buddhist and many more. We are here for all of you, as well as those without a faith or religious background. The Lincoln Chaplaincy team offer pastoral and spiritual support anytime you need it.

Learning, Teaching and Library (LTL)

The Learning, Teaching and Library team can help you to get the best out of your studies with learning support and access to an extensive collection of online and print resources.

They also provide a quiet place for you to study, either individually or as part of a group in a designated study space.

The team can equip you with a range of study techniques, including helping you to strengthen your writing, find resources, manage your research, enhance your learning and develop your career.

Additionally, they can assist with referencing and data.

You can find the Learning, Teaching and Library team on the ground floor of the iconic Ivey Hall building at the heart of campus.

Careers and Employment Advice

Sometimes choosing the right career path is easy. But if it's not, our experienced advisors and extensive resource information can help you make an informed decision. Lincoln students and graduates can access Lincoln Careerhub, a site that provides information about the graduate job market, internships, graduate programmes, scholarships, immediate vacancies and employer events. Plus we also host a range of recruitment events throughout the year featuring employers on campus for drop-ins, information sessions and networking.



Nur Khaririyatun (Indonesia)

Master of Management in Agribusiness

Nur Khaririyatun, or Khori, chose Lincoln because of its high world ranking. "The courses are applied, and I am sure they will help me in my job. New Zealand is also very good at farming, so I can learn from that environment too."

She is really enjoying her study at Lincoln. "Good friends, good environment, and good support from lecturers. It's a comfortable place, which makes study fun."

She has some recommendations for international students.

"Every student should do EAP (English for Academic Purposes) before starting their courses." You learn the research skills that are important for assignments, exams and research. "Before I came here, I was so nervous because my English is not good. The most important thing is to think positive and work hard. New Zealand is a very beautiful country. You will not be disappointed."

Every student should do EAP (English for Academic Purposes) before starting their courses.

NauMai NZ

NauMai NZ is for international students studying or about to study in New Zealand. It's an opportunity to get useful information to help you experience our land, lifestyle and culture, and navigate daily life along the way! Find out more at naumainz.studyinnewzealand.govt.nz

Accident insurance

The Accident Compensation Corporation (ACC) provides accident insurance for all New Zealand citizens, residents, and temporary visitors to New Zealand, but you may still be liable for all other medical and related costs. Further information can be viewed on the ACC website: www.acc.co.nz

Medical and travel insurance

International students (including group students) must have appropriate and current medical and travel insurance while in New Zealand.

All New Zealand universities, including Lincoln University, endorse the insurance plan known as Studentsafe-University. You can read more about the policy, premiums and contact details for claims: www.lincoln.ac.nz/insurance

Activities

Orientation

At Lincoln, we want you to grow into the best you can be so we design orientation to help you begin your path to success. New students are encouraged to take advantage of as many orientation activities as

possible, because that's the best way to settle into your new life as a Lincoln University student. You will also have the opportunity to meet new people and make friends at a range of social and cultural activities.

Get a head start with improved English skills

If you need to improve your English language skills before you study, Lincoln University offers a Graduate Certificate in Academic English. Please visit: www.lincoln.ac.nz/english

Visas after graduation

You may apply for a visa to work in New Zealand after you finish your study if you have an acceptable qualification. Find out more at: www.immigration.govt.nz



Additional support services

Careers and Employment Advice

Sometimes choosing the right career path is easy. But if it's not, our experienced advisors and extensive resource information can help you make an informed decision. We stay in close contact with the graduates promoting internships, graduate programmes, scholarships, immediate vacancies and employer events on Lincoln CareerHub. Plus, we also host a range of recruitment events throughout the year featuring employers on campus for drop-ins, information sessions and networking.

Chaplaincy

Many students come from a faith background, such as Christian, Muslim, Hindu, Buddhist and many more. We are here for all of you, as well as those without a faith or religious background. The Lincoln Chaplaincy team offer pastoral and spiritual support anytime you need it.

Foodbank

Our International Support Advisors and Chaplaincy Services manage the Lincoln University foodbank, which has a range of toiletry, cleaning and food products. It's an excellent option if you are struggling to pay your bills and find yourself sacrificing food over other priorities.

Learning support

Located in our iconic Ivey Hall, the Learning, Teaching and Library team offer postgraduate writing retreats in collaboration with wellbeing support, which will prove invaluable during your study journey.

Student health and support

We know sometimes things can seem daunting, or life can present an obstacle or two. And we really want you to know that we care and you don't have to deal with things alone. So we offer a full range of health and support services available on campus to make sure your time at Lincoln is a happy one.

Alumni Association

Once you successfully complete your studies at Lincoln University, you become what is known as an alumnus (male), alumna (female) or alumni (plural) of the university, meaning a former student.

You'll be part of a global community of alumni, able to connect with each other and friends of Lincoln University.

All students who complete a course of study are automatically members of the Lincoln University Alumni Association and membership is free.

Supervisory Research Team

The Supervisory Research Team works with postgraduate students to identify their goals and monitor their progress throughout their study.

Lincoln University's small size means that students benefit from frequent contact with their supervisors. The university also has close professional relationships with many industry organisations, which adds extra depth to research support.

However, if you're just starting out in postgraduate study, you need to make sure you and your supervisor have a clear understanding of what's required. The mutual expectations of postgraduate supervision information can help with key aspects to cover with your supervisor.

Study resources

Our Library, Teaching and Learning facility offers all researchers a range of resources, including theses and dissertation writers. It aims to help you with study techniques, disability support, finding resources, strengthening your writing, managing your research, referencing and data, enhancing your teaching, and developing your career.

Our Library, Teaching and Learning offer regular workshops as well as individual consultation. The Library, Teaching and Learning have expert services to help you with some of the special demands of postgraduate study, such as preparing a thesis or dissertation, drafting a research proposal, effective tutoring, or research methods. More information can be viewed at ltl.lincoln.ac.nz

Additional Information

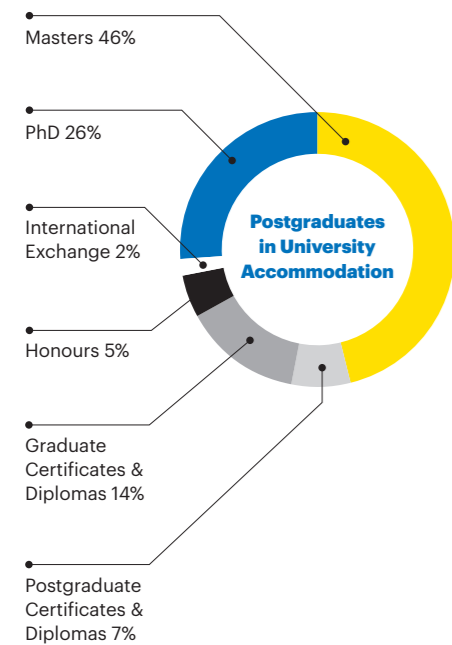
Accommodation

Lincoln University on-campus accommodation has a way of making you feel at home, and that definitely includes post-graduates too.

It's a friendly village living atmosphere where you thrive and enjoy friendships that will last a lifetime. Our campus is home to around 600 students during the university year and you can choose between catered Halls of Residence, self-catered flats or houses.

There's always something fun going on and you're just a short walk away from the learning facilities you need, as well as the gym, shops, cafés and bars.

If living off campus is more your style, regular bus services to and from central Christchurch make that easy too. Lincoln, Riccarton and Rolleston are popular location options for students because of their convenience to both the university and Christchurch city centre.



Some of Lincoln's on-campus accommodation and facilities available at Lincoln:

- 1 Dining hall
- 2 Lincoln University house
- 3 Farm Road Flats



Apply and enrol

Ready. Set. Grow.



Apply and enrol at
www.lincoln.ac.nz/apply

Key dates and events

Here are some of the events you won't want to miss as you consider your Lincoln journey.



Make sure you go to www.lincoln.ac.nz/key-dates for more info and the exact dates these exciting events take place.



Information Evenings

A chance to chat with academics from our areas of specialisation, network with existing students and find out more about accommodation, scholarships and student wellbeing and experience in a relaxed atmosphere in a city venue with nibbles and beverages.

> VARIABLE



Halls application start/finish and moving in

Do you want to live on campus and get the full "Lincoln experience"? Halls applications open in October and move in is in February.

> OCTOBER & FEBRUARY



Hui Whakatuwhera Open Day

A whole day when you can tour our campus and learn why Lincoln University is such a great place to study with subject presentations and lecturers and students available to answer all of your questions.

> JULY



Scholarship applications

We have hundreds of scholarships available, but Lincoln scholarships like Future Leader and Sports Scholarships close in August. You can check them all out on our website, see if you meet the criteria, and find out all the closing dates.

> AUGUST



Enrolments

Enrolments open in October but you can apply anytime. Once we have offered you a place and you have accepted then you can begin your enrolment.

> OCTOBER OR APPLY ANYTIME



Rā Whakawhanaukataka - Orientation Day

Rā Whakawhanaukataka-Orientation Day brings together our new students to celebrate the start of their Lincoln University journey.

You'll meet other students, learn what it means to belong to the Lincoln whānau and find out what to expect in your first lectures.

> FEBRUARY

Preparation Week

Preparation Week is the perfect time for new and existing students to get assistance with completing to-do lists (including enrolment) and find your way around campus before the start of lectures.



Semester dates

Semester 1 starts in February and Semester 2 in July, and you can start your study in either (as long as your course or programme is offered then), as well as Summer School which starts in November and again in January.

> SEM 1 - FEBRUARY
SEM 2 - JULY

SUMMER SCHOOL
NOVEMBER & JANUARY

Terminology

Block

Each course is assigned to a timetable block. Each block is then allotted certain hours in the week, during which lectures will take place.

Course

Each qualification consists of a number of courses, which are set out in the regulations for the qualification. A course is a module of work for which a grade is given that appears on the student's transcript.

Credits

The number of credits allocated to a course is a measure of the size of the course, eg 120 credits equals one full-time year.

Elective

An elective is a course that is not part of the core of a programme but which is available to students enrolled in that programme.

Enrolment

The process where students notify the university of their intention to study by providing detailed information and enrolling in (selecting) courses.

Faculty

A group of staff members who conduct or assist with teaching and research in a particular field. Faculties also group departments and research centres together. The head of the faculty is the Dean.

Laboratory

Many courses have laboratory requirements. These are usually practical sessions related to lecture material.

Lecture

The main method of teaching at university. These are classes held at prescribed times for each course. The university timetable outlines when each lecture is held for each course.

Level

Courses are taught at different levels that reflect the difficulty and the degree of advancement of the course. For example, 100-level courses are generally taken in the first year of a Bachelor's degree. 600-level courses are usually taken at Master's degree level.

Major

An area of study in which you specialise by taking a group of subjects including advanced level subjects.

Orientation

A programme of events at the start of the semester to introduce new students to university life. The first week of lectures is often known as O Week (Orientation Week).

Postgraduate

Further study usually undertaken by students who have completed an appropriate Bachelor's degree.

Practical Work

Some programme regulations require a specified period of related practical work to be completed before the student may graduate or be awarded their certificate or diploma. This is work undertaken in a workplace with criteria that must be met in order to achieve the qualification.

Prerequisite

In some cases, students may not enrol in an advanced course unless they have satisfactorily completed a lower level course in the same field. In this case, the required lower level course is called a prerequisite. A course is only listed as a prerequisite for an advanced course if students could not reasonably be expected to handle the advanced course without having the prerequisite.

Qualification

Each qualification consists of a number of courses which are set out in the regulations for the qualification.

Recommended preparation (prep)

When one course is thought to be important, but not absolutely essential, as preparation for an advanced course, the course will be listed as recommended preparation for the advanced course. Students are advised to have taken the recommended preparation before enrolling in the advanced course. They are not, however, required to have taken the recommended preparation.

Restriction

Students may not receive credit for two courses that have a substantial amount of material in common. If there are two courses in the same schedule that have a substantial amount of common material, then there will be a restriction between them. In that case, you may not credit both to the degree or diploma.

Semester

The academic year is divided into two halves called semesters. The word 'semester' derives from the Latin words 'for six and month'.

Subject

The components or modules of a course. A subject is a module of work for which a grade is given that appears on the student's transcript.

Timetable

A daily programme of the time and place where subjects are taught. All students receive a copy of their course timetable at registration.

Tutorial

A small group teaching session where academic issues and problems of a subject are discussed with a tutor.

Undergraduate

An undergraduate is a university student studying for a Bachelor's degree or a certificate or diploma that did not require a previous degree for admission.

Contacts

Lincoln University Te Waihora Campus

Ellesmere Junction Road/Springs Road
PO Box 85084, Lincoln University
Lincoln 7647
Canterbury, New Zealand

E: grow@lincoln.ac.nz
P: 0800 10 60 10 (NZ)
P: +64 3 423 0000 (International)

Student Liaison Officers

Our Student Liaison team will be the first point of contact for you as a future student. They can give you all the information you need and answer any questions you may have about course planning, applying, or life at Lincoln, or they can refer you to an expert. The Student Liaison team also visits secondary schools and attends career expos in all regions.

E: grow@lincoln.ac.nz
P: 0800 10 60 10
P: +64 3 423 0000
www.lincoln.ac.nz/liaison

Te Manutaki Office of Māori & Pasifika Development

The Māori and Pasifika team are here to support you on your educational journey, including study, scholarships, wellbeing and cultural support.

P: +64 3 423 0000
E: ompd@lincoln.ac.nz
www.lincoln.ac.nz

Campus Tours

We offer personalised guided campus tours with an individualised itinerary so you can experience the parts of campus that interest you the most. Tours take about 60 minutes.

To book your tour, get in touch with one of our Student Liaison Officers. Send us your contact details along with a list of your interests and we'll be in touch.

International Office

The International Office promotes and markets Lincoln University to prospective international students and works with its global network of education agents to provide high quality customer service.

We also support students with programme and course advice and help students through the University's applications and enrolment processes.

E: international@lincoln.ac.nz
P: 0800 10 60 10
P: +64 3 423 0000
www.lincoln.ac.nz/international-office

Student Administration

E: mylinc@lincoln.ac.nz
P: 0800 10 60 10
P: +64 3 423 0044

Research Management Office

E: rmo@lincoln.ac.nz
P: 0800 10 60 10
W: research.lincoln.ac.nz



View the Lincoln University campus map at www.lincoln.ac.nz/map

Disclaimer Every effort is made to ensure that information in this publication is correct at the time of printing, but the content may be subject to change. Lincoln University reserves the right to make changes, amendments or deletions – including the withdrawal of courses – should circumstances change. Lincoln University does not assume, and hereby disclaims, any express or implied liability whatsoever to any party for any loss or damage caused by errors or omissions, whether these errors or omissions result from negligence, accident or any other cause. February 2023.





LINCOLN
UNIVERSITY
TE WHARE WĀNAKA O AORAKI